



Kale Logistics

Technology that Transforms

Thoroughbred IT Solutions

A Portfolio of IT Solutions for Multi Modal Logistics & Trade Facilitation



CREDENTIALS & SOLUTIONS

Kale Logistics Solutions is a trusted, global IT Logistics partner and serves Fortune 500 companies. Kale's solutions for Customs Brokers, Freight Forwarders, Shipping Line Agents, Stevedores, Surveyors, Container Freight Stations, Equipment Control Providers, Vessel Charterers, 3PL operators, Warehouse Operators, e-Commerce Logistics Players, Transportation Providers, Airport Cargo Terminal Operators, Other Air, and Ocean Port Cargo Stakeholders, are helping them to achieve faster growth, standardize processes and operational efficiencies.

Kale's broad solution spectrum ranges from 'Internal Business Automation Systems' to 'Community Platforms' that help various players in the logistics value chain from shipper to consignee; to communicate and transact with each other electronically.

An active partnership with key industry bodies and customers keeps Kale Logistics at the forefront of emerging trends. The company employs a dedicated team of techno-functional experts, with a complete physical setup and support infrastructure. Kale has been awarded several coveted industry accolades, such as 'Logistics IT Provider' for the last eight consecutive years. With over 1000+ man-years of experience, Kale Logistics' IT solutions and next-generation digital collaboration platforms are unifying the entire global Logistics Industry. With 4500+ clients worldwide across 35+ countries, Kale provides the most comprehensive and thoroughbred portfolio of IT solutions for the Logistics Industry.

'Technology that Transforms' is the guiding principle behind the core foundation and operations of Kale Logistics. It represents Kale's business focuses and expertise in providing technology solutions that help transform the way business operations and B2B transactions are executed.

Kale Logistics works closely with industry associations and is led by a team of techno-savvy functional experts with the zeal to be the drivers of change. It is this drive and energy@ work which has enabled Kale to consistently create successful solutions for its clients.



TRADE FACILITATION

COMMUNITY PLATFORMS

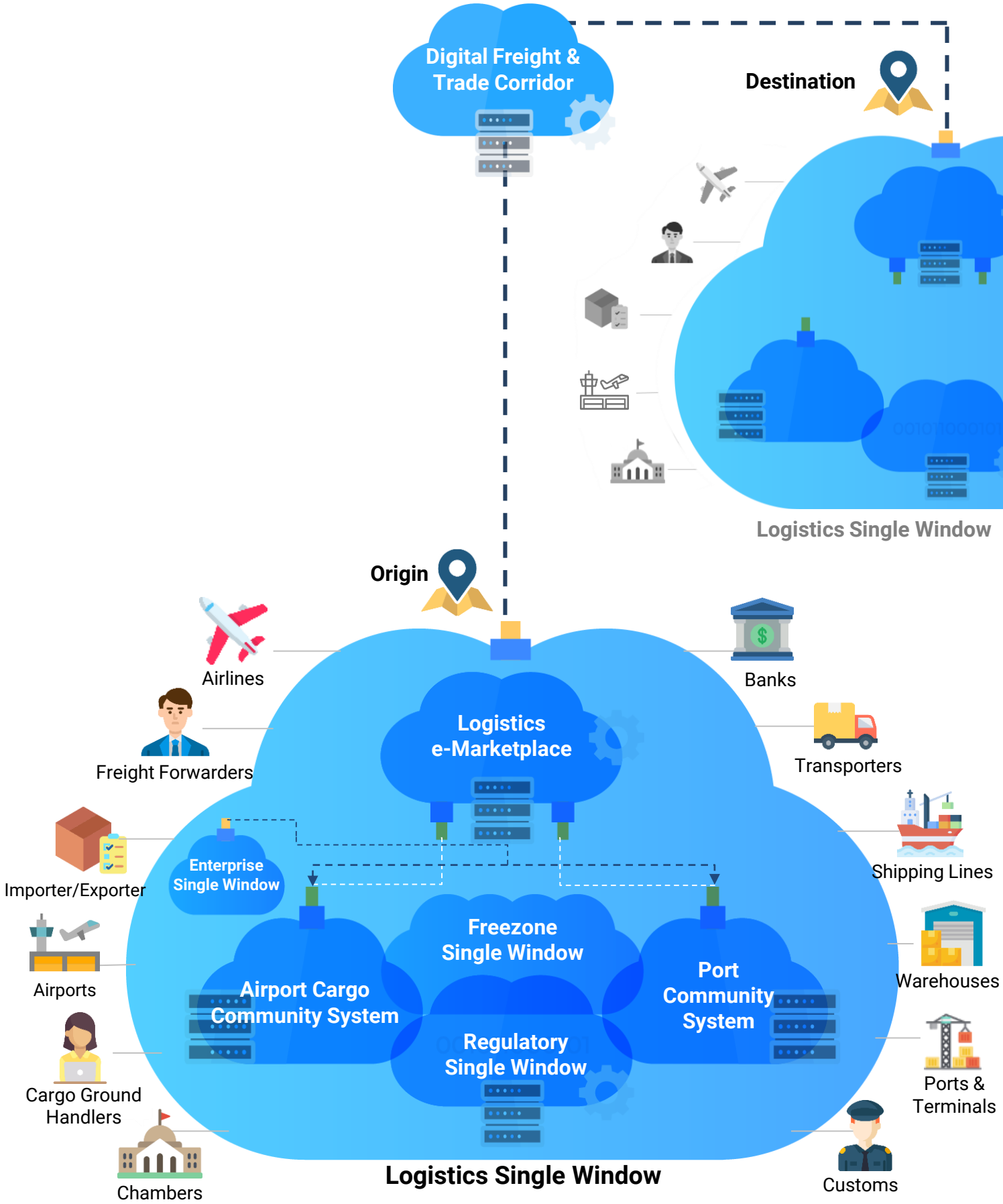
Airport Cargo Community System | Port Community System | Logistics e-Marketplace

Regulatory Single Window System | Digital Freight & Trade Corridor

e-SERVICES

Air Cargo e-Services | Maritime Cargo e-Services

Interplay of Digital Trade and Freight Platforms



ADDRESSING CONVENTIONAL CHALLENGES IN AIRPORT CARGO COMMUNITIES

Airports play a key role in the movement of cargo by air. Air Cargo represents over 35 percent of global trade by value and is expected to be worth US\$130.12 billion by 2025. But the industry continues to face significant challenges, such as fallen global trade volumes, global economic activity, and weakening consumer confidence, indicating further declines.

However, the market is expected to grow due to factors such as strong demand for manufacturing exports and increased penetration of advanced technologies in the value chain. In addition, the overall growth rate in the e-commerce sector is expected to reinforce the growth prospects globally.

AIR CARGO AND THE DOCUMENTATION WOES

The Air Cargo industry has gained more prominence in the recent past due to the growing demand for the swift requirement for cargo at the destination in a record short time. But, the pressure of physical documentation at each level and this calls for a 360-degree process and functional transformation. As per IATA, each air cargo shipment on average carries around 30 types of documents and well over 100 copies, thus resulting in significant documentation overheads, increased dwell times and supply chain opaqueness. Airport Cargo Community System (ACS) facilitates seamless movement of goods and information between all the allied stakeholders.

KALE'S AIRPORT CARGO COMMUNITY SYSTEM

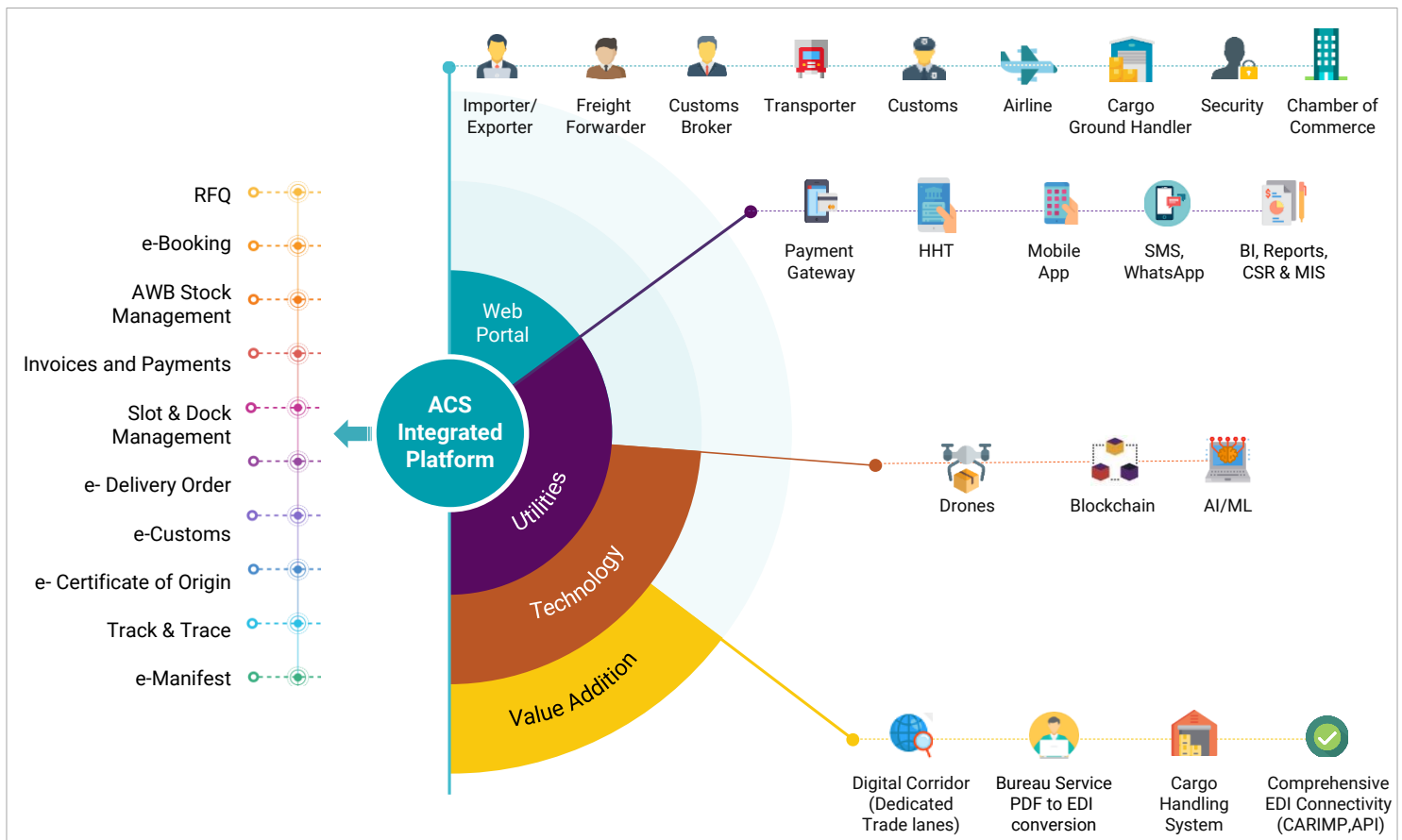
Kale's Airport Cargo Community System (ACS) is a United Nations award-winning Single Window electronic platform for all stakeholders of the air cargo value chain to interact with each other digitally, thereby eliminating unnecessary documentation, delays, the opaqueness of supply chain and improving ease of doing business for the air cargo sector.

It seamlessly connects Airport, Cargo Ground Handlers, Transporters, Freight Forwarders, Customs Brokers, Airlines, Importer/Exporters and Customs on a common cloud-based IT platform.

The system is targeted toward helping the supply chain participant overcome the pain areas of interaction with other partners in the supply chain.

SINGLE AUTOMATED SYSTEM FOR EASE OF DOING BUSINESS

ACS is an award-winning community platform designed for air cargo movement. It not only addresses the issues of cargo visibility but also enables the SME players in the supply chain with smart apps.



Airport Cargo Community System Context Diagram

UNIQUE FUNCTIONAL CAPABILITIES

- **e-Booking:** Forwarders can view the airline schedules and request bookings. Standard EDI messages can be exchanged to request a booking and receive confirmation from airlines.
- **e-AWB:** Provision to capture and amend AWB's. FWB/FHL messages can be triggered to the airlines and handlers to give them pre-alerts. Also, it has a provision for AWB stock management.
- **Slot & Dock Management:** Provision to configure slots and docks so that trucker/ forwarders can book them to bring their cargo to the airport.
- **e-DO:** Generate airline Delivery Order (DO) and make payments through pre-deposit accounts or payment gateways. CONSOL DO can also be released by the agents to sub-agents/consignees.
- **e-Manifest Filing:** Convert FFM messages received from airlines to Customs format and file it with Customs. Acknowledgement received from customs can be sent back to the airlines. Helps in CONSOL Manifest (CGM) filing to Customs.
- **e-Payment:** Forwarders can make payments through the portal using pre-defined accounts or payment gateway interfaces.

BUSINESS BENEFITS

- **Reduced congestion:** Reduced truck wait times at the terminal with slot booking and advance shipment information to a cargo handler. Also, reduce physical queues at airport counters.
- **Improved efficiency:** Faster processing of cargo with minimal manual documentation. Online payments to expedite shipment delivery. Real-time updates of various milestones through the Mobile App. Optimal resource and warehouse planning with advance shipment notice.
- **Sustainability and Compliance:** Meet the sustainability goals of the airport with paperless trade. Reduces carbon footprint by 75%. Developed as per the guidelines of WTO Trade Facilitation Agreement and UN Trade Facilitation Recommendation no. 33.
- **Visibility and Transparency:** Business continuity even during pandemics with minimal touchpoints. Data available brings in the required business foresight with intelligence with MIS.

PIONEERING AIR CARGO TRADE UNINTERRUPTED WITH A SINGLE-WINDOW PLATFORM AT MUMBAI INTERNATIONAL AIRPORT THROUGH AMAX

Business Challenge

Mumbai International Airport Limited is among the busiest airports in the world. Truck congestion, longer waiting times causing delays, ambiguity in data handling, the duplicity of data handling and lack of advance shipment information were among some key challenges faced by the airport and stakeholders in the ecosystem.

Solution

AMAX is an airport cargo e-platform, which facilitates digital interactions among airport stakeholders. It is a modern, scalable and competitive application that caters to the growing demands of the cargo operations at Mumbai Airport. It simplifies the processes at the airport through a single window of digital documentation.

Parameter	Pre AMAX	Post AMAX
Document handled (including copies)	128	24
Avg Queue Time for document/payments	1 hr 20 minutes	Nil
Airport Counters	9	1
Average time per export doc handling	28 minutes	6 minutes
Average time per import doc handling	22 minutes	8 minutes
Accuracy of data	85%	94%+
Waiting time for Export Trucks	2 hours+	30 minutes
Availability of data to stake holders	Through Mail, calls and in-person	Portal, EDI, App, On Demand



Watch a short video on ACS

ACS eliminates wait time for trucks and congestions at airports with Slot Booking

GLOBAL MARITIME INDUSTRY - A DYNAMIC MARKET

The international Maritime and Ports industry is responsible for the carriage of around 90% of world trade. Shipping is the lifeblood of the global economy. Seaborne trade continues to expand, bringing benefits for consumers across the world through competitive freight costs. Thanks to the growing efficiency of shipping as a mode of transport and increased economic liberalization, the prospects for the industry's further growth continue to be strong.

PORT COMMUNITY SYSTEM - A GAME-CHANGER FOR THE MARITIME INDUSTRY

Though most Sea Ports have been relatively slow in embracing automation and digitization as compared to other modes of transportation however the pace is now accelerating.

Ports are facing a shortage of human resources, non-availability of the correct information from Port Users, poor data quality, siloed operations and difficulty in handling exceptions.

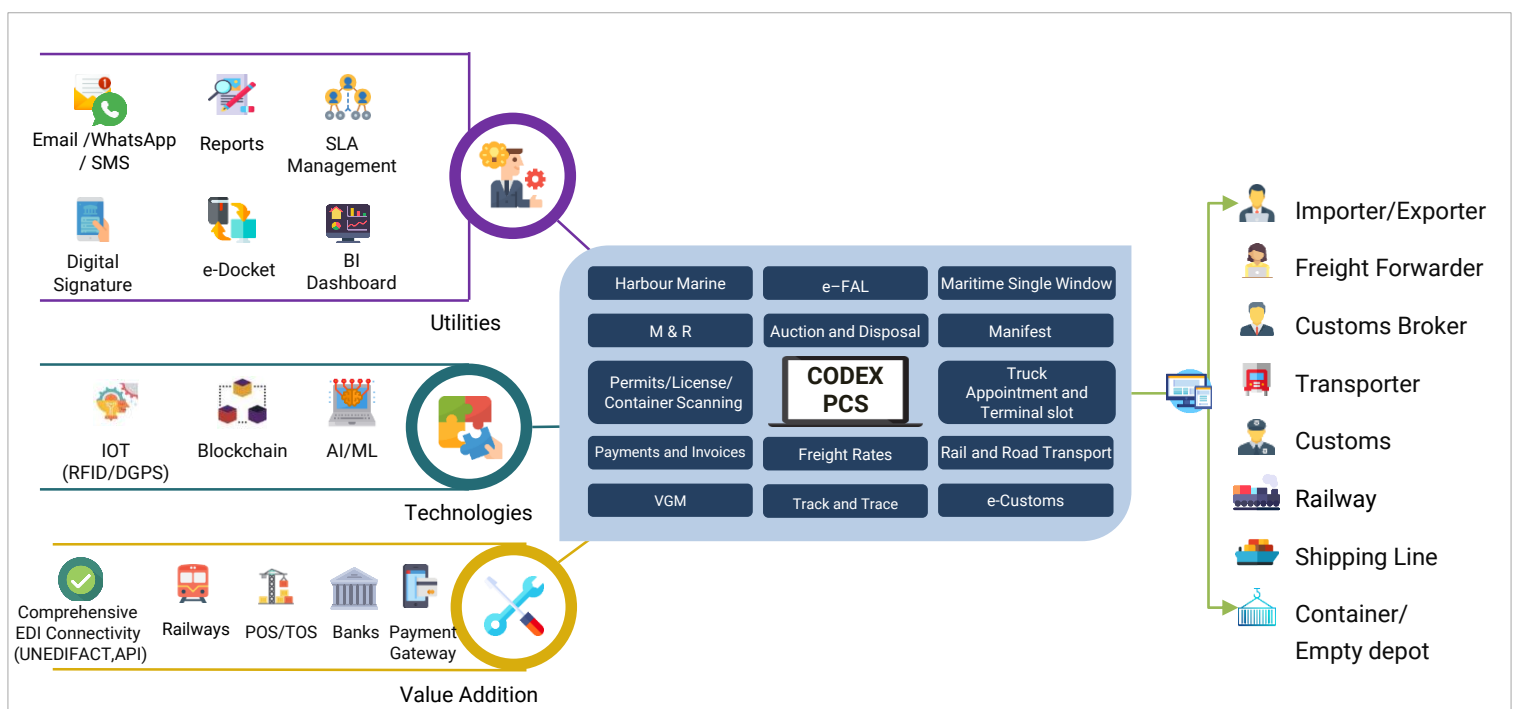
Technological innovation plays a key role in developing solutions to provide a solution to these challenges with API integration. Port Community System (PCS) is an excellent example of the same.

KALE'S CODEX – PORT COMMUNITY SYSTEM

Kale's CODEX PCS is a United Nations award-winning innovative platform developed to not only bring together the stakeholders of the maritime sector onto a single platform but also facilitate government-to-business, business-to-government and business-to-business transactions in a highly secured environment. Customs, Port authorities, forwarders, shippers, shipping lines, terminal operators, inspection agencies, haulers, and railway operators – all of these and more need access to smart real-time information. The platform provides the business community with a streamlined process for submitting export and import information to customs and other government agencies and also exchanging information amongst themselves.

PCS ENABLING DIGITAL TRANSFORMATION FOR PORTS AND CONNECTED STAKEHOLDERS

CODEX framework enables two distinct elements currently missing from existing PCS. The first part is the enablement of Smart Apps for SMEs in Freight Forwarding, Customs Brokering, Trucking, Warehouse operations, and Empty/Laden Container Depots. These solutions empower the SME players in the value chain to automate their internal business processes in an end-to-end manner. This PCS 3.0 enables EDI exchange in UN/EDIFACT format with the stakeholder and enables deep tech like Blockchain/AI/ML in solving the inefficiencies present in the current portal-based exchange of documents and visibility.



Port Community System Context Diagram

UNIQUE FUNCTIONAL CAPABILITIES

- **Vessel & Harbour Marine:** Shipping line declares the vessel and voyage with the port/terminal authorities. Based on the declaration, the port/terminal allots the VCN. Shipping Line requests for berthing/Un berthing/pilotage services with Port/Terminal. Approval and allotment of berth/captain done by Port/Terminal.
- **e-FAL:** Ports can capture advance information in electronic format for vessel arrival, stay & departure.
- **e-DO:** Agent can request DO online for multiple carriers on a single platform. Payments, issuance, and re-validation are carried out electronically.
- **Container Booking:** Agent requests empty containers from shipping line based on which the liner approves and assigns empty container location and released CRO (container release order).
- **Terminal Slot Management:** Provision to configure and book slots as per calendar days and time on fingertips. Helps in by 35% Gate congestion reduction.
- **e-VGM:** Works as a stand-alone SaaS-based Web application with SOLAS compliance. Allows EDI inbound submission as VERMAS, or (IFTMIN) EDI messages or XML equivalents.
- **Track & Trace (Vessel, Cargo & Container):** Access to real-time container status events and alerts.

BUSINESS BENEFITS

- Reduced Ocean and Landside Dwell times up to 60%.
- Reduction in cost of Logistics across stakeholders up to 40%.
- Contactless and Paperless with Accurate and timely data.
- Real-Time updates lead to better planning across stakeholders.
- Invoices and Payments handled seamlessly.
- Rapid improvement in Ease of doing business and LPI ranking. Trading Across Borders Rank can potentially go up by 10 places, directly impacting FDI flow.



Reconised by United Nations as Best Trade Facilitation Innovation

ENABLING FASTER CONTAINER THROUGHPUT & LOWERING CONTAINER DWELL TIME AT TUTICORIN PORT, INDIA

Business Challenge

V.O. Chidambaranar Port in Tuticorin, India, faced the regular chores of truck congestion, waiting times and operational delays caused by redundancies in operations. In addition, the new tax system introduced, the tax refunds had delayed for the exporters for up to 120 days. This was due to the inaccuracies in the shipment data filed.

Solution

Kale Logistics Solutions deployed the first instance of CODEX within three months of starting the project. CODEX provided a digital gate pass for containers—a single digital document that was mapped to individual containers via a barcode—that was accessible to every stakeholder to view and fill. The availability of information in advance allowed seamless movement of the container from the container depot to the port in 25 mins from the erstwhile 2.5 hrs. With all the data being digitized, it reduced documentation errors significantly. Data filed for tax refunds by the exporter was 95% accurate, which enabled speedy refunds within a week. The Platform also contributed to the sustainability goals of the port by reducing carbon emissions by 75%.

Parameter	Pre Codex - PCS	Post Codex - PCS
Average fuel consumption by trucks for 11kms travel from CFS to Port	15 litres	5 litres
Average container gate-in time	12-15 hours due to the manual invention in linear, seal, and shipping bill verification	2-3 minutes. The average container gate-in is 500-600 per day.
Documents required	15+	1
Container dwell time	2.5 hrs	25 mins



Watch a short video on CODEX -PCS

This video explains how CODEX - PCS facilitates trade in the Maritime sector.

ONE-STOP MULTI-MODAL LOGISTICS E-MARKETPLACE FOR ENTIRE SUPPLY CHAIN ECOSYSTEM

Freight exchange platforms exist for a while, but there is still a gap between connecting end-to-end logistics digitally seamlessly.

This need is gradually pushing for transparent, flexible, and seamlessly adjustable services that are fostering a variety of logistics demands in terms of supply. Importer/Exporters process automation linked to the freight exchange platforms is completely missing, which happened post-booking.

A HIGHLY FRAGMENTED SECTOR

The continued surge in e-commerce demand and the need to provide more cost-effective transportation options for shippers have led to steady but significant growth in the logistics marketplace. Higher logistics costs have been a worry for most countries and industry.

SHAPING THE FUTURE WITH LOGISTICS E-MARKETPLACE

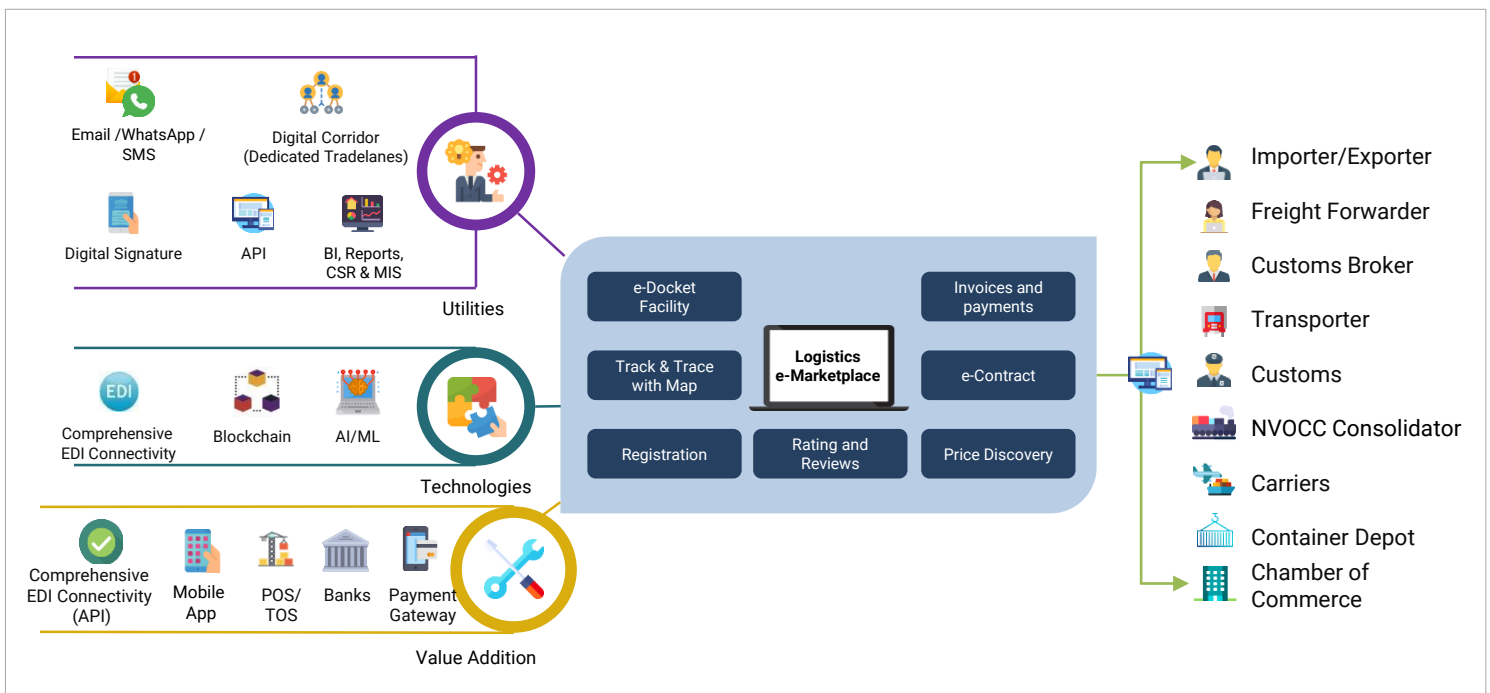
Logistics e-Marketplace is believed to be the right way to enable seamless connectivity between Shippers, Freight Forwarders and other stakeholders in the loop. The Platform enables an organization to connect with all of its supply chain stakeholders on a single platform. Whether it is for document exchange, data exchange, or status updates, the platform enables connectivity in real-time with entities such as Freight Forwarders, Customs Brokers, Transporters, Warehouse Providers, etc.

KALE'S LOGISTICS E-MARKETPLACE

Kale Logistics Solutions' Logistics e-Marketplace platform connects supply chain stakeholders such as Freight Forwarders, Customs Brokers, Shipping Lines, Airlines, Transporters, Shipper, Consignees, Warehouse Operators, Rail Operators, and Regulatory Authorities. The platform digitizes the entire shipment process of rates, schedule, booking, contracting, delivery, invoice and payment.

The platform helps Logistics Service Providers to actively participate in the cargo movement process by ensuring their services remain price competitive and highly flexible. It matches companies looking to ship freight using one or multiple modes of transport with service providers of suitable capacity.

In addition, the platform also enables all entities within the parent organization to connect and exchange information related to shipments on a real-time basis through a Control Tower.



Logistics e-Marketplace Context Diagram

UNIQUE FUNCTIONAL CAPABILITIES

- **Registration:** User-friendly registration, login, and subscriptions on the go.
- **Price Discovery:** Covers multi-modal transportation, Rates & Quotes, e-Booking and Carrier Schedules.
- **Payments:** Online payments facility with invoicing, e-contract, and prepaid account.
- **Reviews and Ratings:** User ratings with feedback and promos are included.
- **e-Docket:** A complete document management system that facilitates document exchange with a digital signature.
- **Tracking:** Complete track and trace with integrated maps, pro-active alerts, and e-Waybill tracking. Track and Trace are supported by Whatsapp, email and chat.

BUSINESS BENEFITS

- **One-Stop Shop:** Single Umbrella Platform for all logistics services.
- **Improved Connectivity:** Online, real-time connection and processing. Connectivity with all stakeholders.
- **Enhanced Efficiency:** Faster turnaround with IT-enabled solution leading to increased productivity, and reduced costs.
- **Seamless Flow of information:** Single window tracking for tracking cargo movement.
- **Business Growth:** Increased visibility leading to higher revenues. Access to a large market with faster sales conversion.
- **Exporters and Importers integration:** Business ERPs can be seamlessly integrated with the platform to perform operations post-shipment.

ORCHESTRATING ENTIRE SUPPLY CHAIN TO COLLABORATE DIGITALLY

Business Challenge

A leading healthcare service provider in coordination with its logistics and Customs Clearance team wanted to introduce a Logistics Single Window platform. This fully integrated platform was aimed at enabling real-time insights on its international shipments and customs clearance. They had limited visibility of the shipment status, with a heavy dependency on freight forwarders and customs brokers for documentation.

Solution

The online platform connects supply chain stakeholders such as Freight Forwarders, Customs Brokers, and other stakeholders with entities and business units of the Healthcare Provider spread across the globe. Equipped with pre-defined controls in terms of approval mechanism and access rights, this platform acts as an enabler and controller of shipment and shipment-related information - including documents - in a single window.

The platform encompasses functionalities related to import-export of commodities, documentation /controls for Customs Clearance, document storage and retrieval mechanism, roles and rights-based workflows, integration with third- party systems, and track and trace including Licenses, Duty Drawback Schemes, Certificates, Bond Management, etc. Visibility on cargo movement is available through interface with internal systems of Airport Operator and Port Operator.



Watch a short video on Logistics e-Marketplace

This video explains how the e-Marketplace generates opportunities for the Logistics Community

REGULATORY SINGLE WINDOW – A PARADIGM FOR GOVERNANCE

The WTO Trade Facilitation Agreement encourages countries to the development and implementation of National Single Windows. Developments in Information Technology have enabled governments to make dramatic improvements in delivering services. Each new development in IT has brought with it a new set of possibilities to help bring transformational change to the regulatory environment of international trade. These developments have not just been about technology but about new business philosophies and architectures that have enhanced convenience and efficiency for the trading community. The emergence of the 'Single Window' concept is one such development.

REGULATORY COMPLEXITIES

Regulatory agencies and governments worldwide find it challenging to enable faster clearance by cutting down delays and improving trade compliance. The processes are suffused with costly inefficiencies, lack of co-ordination among cross-border regulatory agencies, and burdensome procedures and documentation.

SINGLE WINDOW - AN INTEGRATED IT PLATFORM

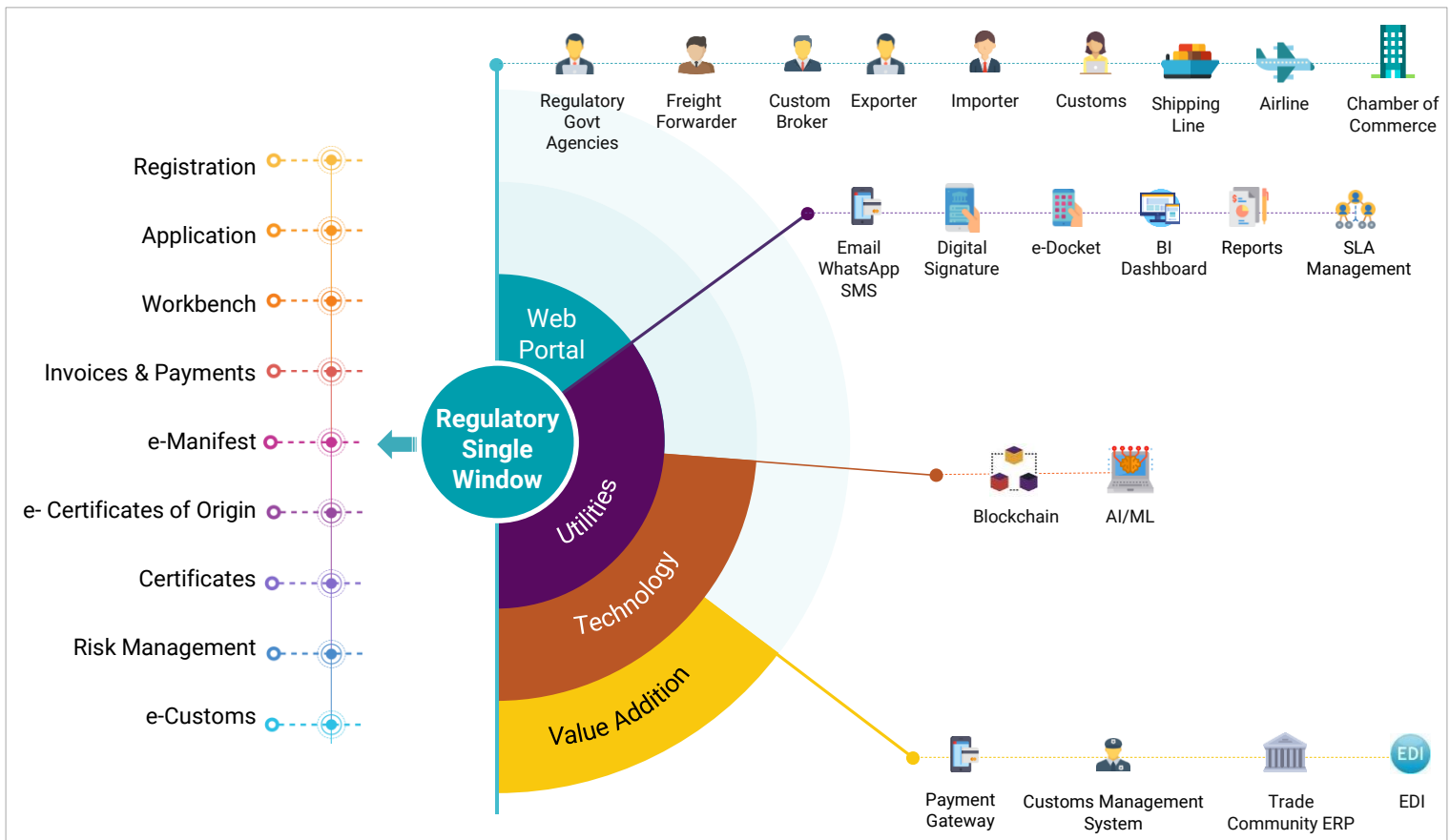
In recent times, the term 'Single Window' has especially gained importance in trade facilitation circles. The trade community strongly supports a Single Window approach because it offers a vision of a dramatically

KALE'S REGULATORY AND CUSTOMS SINGLE WINDOW SYSTEM

Kale Logistics Solutions' Regulatory and Customs Single Window facilitates the Trading Across Borders for nations. The platform allows importers and exporters, the facility to submit their certificates, licenses, permits and clearance documents online at a single point with government agencies and customs. Required permissions, if any, from other regulatory agencies would be obtained online without the trader having to approach these agencies. The platform reduces interface with governmental agencies, dwell time and the cost of doing business.

Risk Management for government agencies puts measures on individual bodies for controls and interventions. It also aims to simplify and streamline interagency procedures and documentary requirements for cross-border trade.

simplified interface with regulatory agencies, whereby the entire government apparatus that deals with the movement of goods across borders is re-engineered to meet the specific and exacting needs of business, while maintaining appropriate regulatory controls.



Regulatory Single Window Context Diagram

UNIQUE FUNCTIONAL CAPABILITIES

- **Registration:** User-friendly registration for traders and agents with approval from Single Window admin. Secured Login using unique credentials.
- **Certificate Management:** Certificates are issued online with e-Signature. Certificate available in XML and PDF format. e-Document repository for all certificates issued.
- **Workbench:** Milestone-based application tracking. Applications can be downloaded in XLS or XML format for data reusability. Applications can be filtered by multiple fields.
- **Risk Management:** Government Agencies can define the risk levels based on their internal assessment. The officers can process shipments based on the risk level which are prompted by the system. Risk levels can be modified based on the collected experience and data.
- **Invoices and Payments:** All fees are collected at once and then disseminated. Payment received using payment gateway and Pre-deposit account. Invoices are generated for agency service charges in the required format.
- **e-Certificate of Origin:** Chamber of Commerce and Customs can issue online preferential and non-preferential certificate of origin to exporters and agents.



ENABLING FAST TRACK CERTIFICATE OF ORIGIN TO 200,000

Business Challenge

Federation of Indian Export Organisations(FIEO) is an apex body of all export promotion councils, commodity boards and export development authorities of India under the Ministry of Commerce. It wanted to digitize the process of issuance of Certificate of Origin (CO) document to over 200,000 exporters.

Solution

Kale Logistics Solutions deployed the very first electronic certificate of origin platform for FIEO in 2016. The solution digitizes the process of Application for CO, Attachment of supporting documents, Verification & Issuance of CO by FIEO.

The exporters can make online payments using the facility of payment gateway and pre-deposit account. This service is availed from 20 branches of FIEO across India, where over 54,000 certificates are issued annually.

BUSINESS BENEFITS

- Eliminates Redundant Data Entries with Security & Encryption
- Real-time Cargo Visibility
- Pro-active Functioning & Operations
- Last Mile Traceability Guarantee
- Enables Informed Decision-Making Capabilities

CARGO VISIBILITY ACROSS NATIONS

The volume of trade has forever been the driving force of economic growth. New production systems, integration of global value chains and trends toward reliance on just-in-time delivery systems mean that more than ever, trade needs to be faster and more reliable. This calls for increasing the quantity and quality of information exchange.

NEED FOR GREATER HARMONISATION

In recent times, emphasis on trade facilitation has been significant. More than ensuring seamless operational capabilities in a single airport/port environment, it is now important to have advanced information on the freight arriving at the cross border. Even though stakeholders at the source manually share information through email and other sources, the possibility of data reaching the right stakeholders on time is limited.

DIGITAL FREIGHT & TRADE CORRIDOR TO BUILD RESILIENCE FOR THE LOGISTICS INDUSTRY

A Digital Corridor is an electronic platform that connects multiple entities to share the status of business activities and relevant information.

The digital corridor is established when an airport/port/customs at a location gets connected with the airport/port/customs at another location to exchange relevant trade and shipment data.

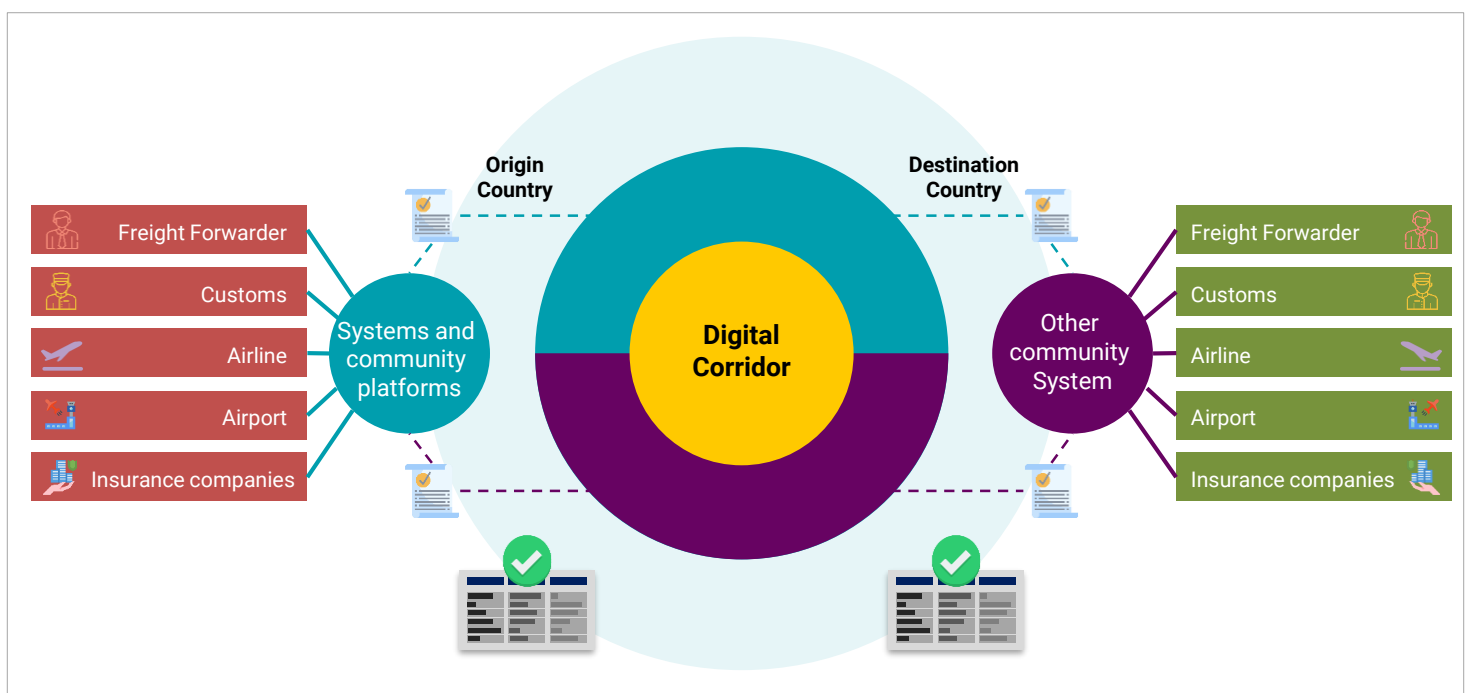
KALE'S DIGITAL FREIGHT & TRADE CORRIDOR

Kale Logistics offers Digital Freight and Trade Corridor to support trade facilitation. The digital corridor allows the country of shipment origin to collaborate with the shipment destination country. It facilitates real-time visibility of shipments exchange from one stakeholder to another and, subsequently, to the trading partner country.

The shipment details, multiple e-certificates and supporting digital documents are safe on a secured and reliable platform. The destination country gets to access all the information before the arrival of a shipment. On arrival of the shipment, the origin country gets all the status updates and other details until delivery of the cargo.

Access to the data is restricted and protected by a strong and complex encryption algorithm. This network can extend to government, regulators or similar bodies by adding them as a participant.

The collaboratively created digital corridor facilitates the flow of information within the stakeholder chain and optimizes cargo visibility across the stakeholder network. These digital data corridors can evolve from connecting one cargo network like an airport community platform in one country to the airport community platform in another country. These hubs can connect multiple countries using the simple principle of data federation and trust.



Digital Freight and Trade Corridor Context Diagram

UNIQUE FUNCTIONAL CAPABILITIES

- Uses IATA One Record data format for APIs to Exchange Data for Air Cargo
- Seamless Data Interchange
- Regulatory Compliance
- Just-In Time Delivery Systems

BUSINESS BENEFITS

- **Visibility & Transparency:** Provide end-to-end shipment visibility from origin to destination. This leads to saving effort and time involved in tracking shipments until their final delivery. Business partners' risk of counterfeiting is eliminated.
- **Swift processing of documentation:** enables shipment information and documentation to be available in advance.
- **Secured data sharing:** A platform-based on Blockchain is resistant to modification of data. Therefore, risks associated with the loss or tampering of data are eliminated.
- **e-Freight compliance:** Digital exchange of documents aligns with the e-Freight initiatives of IATA.
- **Cost saving:** Eliminates paper from transactions amongst stakeholders. Multiple copies of AWB generated for acceptance at the truck dock, cargo screening and Carting Order gets eliminated, thereby reducing cost.

CONNECTING MUMBAI AND SCHIPHOL AIRPORTS THROUGH THE DIGITAL FREIGHT & TRADE CORRIDOR

Business Challenge

Trade between India and The Netherlands was carried out, however, visibility of a shipment up till final delivery to the consignee was a challenge. After a shipment departed from the export location, shipments status visibility was not available to the stakeholders at the origin.

Kale conceptualized and worked in partnership with Cargonaut, a cargo community system provider in the Netherlands, to create the world's first digital air freight corridor between Mumbai and Schiphol Airport. The Digital Corridor was established to create a completely transparent supply chain.

Solution

This Digital Freight & Trade Corridor is powered by Blockchain and iShare enabling all players in the community to connect based on mutual trust, irrespective of type, size, modality and jurisdiction.

iShare is a framework of agreements on the identification, authentication and authorization of actors. The framework delivers a transformational level of maturity in the way stakeholders share data with other partners, and partners of partners that they may not know. The digital corridor uses IATA's ONE RECORD data format for APIs to exchange data.



Read the Article

How Digital Trade Corridors are the need of the hour

e-Services

With the commencement of the digital era, logistics companies are obligated to redefine and manage their business globally. Providing modern business solutions along with the latest trends and technologies to keep their customers content has become a mandate.

Kale Logistics Solutions has in-depth domain expertise and experience to support the Air Cargo as well as the Maritime industry by offering electronic services for facilitating real-time “Information flow” throughout the journey. This enables business owners to make informed and faster decisions, thus, resulting in optimized operations for better margins and enhanced customer experiences.

Customer-centric approach and innovation prowess have always been our key strengths. This is allowing Kale to deliver disruptive solutions and technology across the Logistics sub-domains.

With all these e-services come many advantages. The core benefits for all parties involved are higher efficiency and speed regarding port processes, particularly through automation and the reduction of paperwork. In this way, Air Cargo & Maritime e-Services contribute to sustainable transport logistics and support the ambitions to meet global carbon reduction requirements.

e-Services for Air Cargo



PING services – converting .pdf documents to system data



Electronic Delivery Orders (e-DO) between the Airlines and Forwarders



Electronic Consolidation (House) DO



Electronic Air Waybill (e-AWB) on a Single Window



Electronic Terminal Charges Payments for e-Invoicing



Electronic Manifest Filing for Airlines



Electronic Consolidation Manifest Filing in Imports for Forwarders



Electronic Certificate of Origin (e-CoO)

e-Services for Maritime Trade



e-FAL



Electronic Delivery Order (e-DO)



Container Appointment & Slot Management



Container Booking & Empty Release Order



EDI Message Service



Electronic Manifest



Shipping Instructions

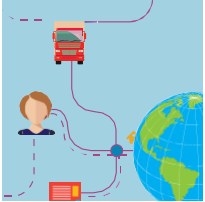


Electronic Certificate of Origin (e-CO)



KALE'S ASSOCIATION WITH GLOBAL TRADE BODIES

Owing to their portfolio of products and services, Kale Logistics has garnered recognition and appreciation from several global industry associations. Their experts hold critical positions in esteemed industry associations such as IATA, TIACA, and other industry trade associations. Kale is impaneled on the coveted United Nations Economic Commission for Europe (UNECE).



RECOGNITION OF TRADE FACILITATION

Kale's efforts in driving Trade Facilitation across the logistics domain have been recognized and appreciated globally. UPLIFT- Kale's Cargo Community System has been featured as a case study in the Supply Chain Management book, authored by Kellogg's Business School academicians. CODEX-India's first Container Digital Exchange Platform is an Electronic Data Interchange (EDI) based platform that has accelerated container throughput at leading ports. This solution has been recognized by the United Nations (UNESCAP) as the best trade facilitation initiative from India and also appears in the list of 'Top 10 innovations' by KPMG in their 'Adding Wings' publication. A case study based on it has been presented to the Honourable Prime Minister as one of the innovations in trade facilitation.



CLEAR VIEW - OUR ANNUAL AIR CARGO THOUGHT LEADERSHIP SUMMIT

CLEAR VIEW - A Kale Thought Leadership Summit for Air Cargo is a first-of-its-kind interactive platform with participation from several global organizations such as leading Airlines, Cargo Handlers, Industry Associations, Regulators, Prominent Industry Consultants, and industry leaders from across the world. CLEAR VIEW encourages the Air Cargo industry to come out with participative and innovative practical solutions concerning the business.



INDUSTRY AWARDS

- 2 times recognized by UN for Innovation in Digital Trade Facilitation
- Top 15 Tech Companies Contributing to National Logistics Policy of India
- Top 30 Companies for Best Business Culture
- Best Technology Solution Provider in the Logistics Industry for 11 consecutive years



INDUSTRY ASSOCIATIONS & TECHNOLOGY PARTNERSHIPS

- The International Air Cargo Association (TIACA)
- Pan Asian Alliance (PAA)
- International Port Community Systems Association (IPCSEA)
- International Federation of Freight Forwarders Associations (FIATA)
- National Association of Freight & Logistics (NAFL), UAE
- Canadian International Freight Forwarders Association (CICFA), Canada
- Air forwarders Association (AfA), USA
- Air Cargo Agents Association of India (ACAAI), India
- Microsoft Certified Gold Partner



WHAT OUR CLIENTS SAY ABOUT US



We are excited by the possibilities that lie in store for us with Atlanta Airport's Cargo Community System, especially the reduction in truck waiting time. The scope of availability of accurate and complete information before the truck arrival has been leading to clarity, cooperation and understanding amongst the stakeholders. This initiative demonstrates the airport's commitment to be the bellwether in creating the new generation digital infrastructure at the airport. It is also the keystone for facilitating the digital trade corridor between Atlanta and Schiphol Airport.

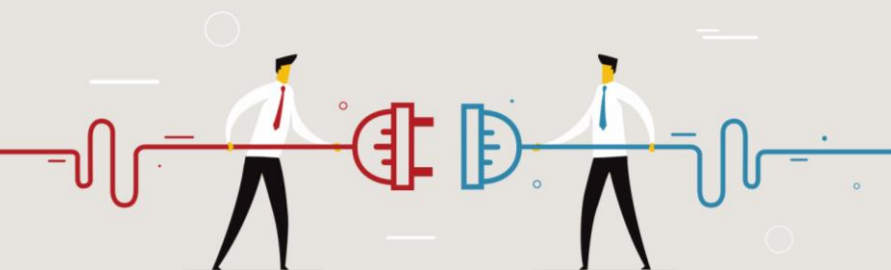
- Mr. Elliott Paige, Airport Director, Air Service Development at Atlanta Airport



We chose Kale after a thorough evaluation of several providers. We feel Kale is at the forefront of innovation in the maritime sector and their experience in this field is very strong. We are now embarking on a journey of rapid growth, and we strongly believe that to achieve this target, a partner like Kale will be an asset for us. The successful implementation of the CODEX PCS will facilitate the promotion of this platform by other ABUPI (Indonesia Port Business Association) network ports in Indonesia.


- Mr. Mindo Sitorus, Chairman of PT Pelabuhan Rembang Kencana


Connect with us




Kale Logistics Solutions Private Limited

9th Floor, Thane One Corporate Business Park,
Behind CineWonder Mall, Majiwada,
Thane (W), Maharashtra, INDIA - 400 610.

 +91 22 4113 4113

 +91 22 4113 4123

 info@kalelogistics.com

 www.kalelogistics.com



India | USA | Canada | Colombia | Netherlands | Congo | Kenya | UAE | Malaysia